

# GraceNotes

*a place for you*

A SEASONAL PUBLICATION OF GRACE LUTHERAN CHURCH



## PASTOR

Rev. Matthew Smuts

[pastormatt@gracepa.org](mailto:pastormatt@gracepa.org)

## VISITATION PASTOR

Rev. Cora Scheel

[pastorcora@gracepa.org](mailto:pastorcora@gracepa.org)

## DIRECTOR OF CHILDREN, YOUTH & FAMILY MINISTRY

Elizabeth Hood

[elizabeth@gracepa.org](mailto:elizabeth@gracepa.org)

## DIRECTOR OF MUSIC MINISTRY

Tim Getz

[tim@gracepa.org](mailto:tim@gracepa.org)

## PRESCHOOL DIRECTOR

Penny McDermott

[preschool@gracepa.org](mailto:preschool@gracepa.org)

## OFFICE ADMINISTRATOR

Gretchen Rauch

[office@gracepa.org](mailto:office@gracepa.org)

## COPY EDITOR/COORDINATOR

Marie McElravy

[publications@gracepa.org](mailto:publications@gracepa.org)

Next Issue: Advent/Christmas 2015

Publication Deadline: November 19, 2015

# Seized

## Faith is permitting ourselves to be seized by the things we cannot see.

### Martin Luther



I am writing this article at 35,000 feet and 649 miles an hour crossing over Wyoming toward Copenhagen and then Berlin, and then Wittenberg. I know a number of you are familiar with this sort of flying/working scenario, but it's a fun step as we look towards 2017 and how we will observe the 500th Anniversary of Martin Luther nailing the 95 Thesis on the Wittenberg chapel door. There are many possibilities and challenges. Is this simply to be a celebration of the breaking of the church? Or is this an opportunity to be a gift to the wider church and world?

Wittenberg, Germany is smaller than Palo Alto. Reformation Day (October 31) 2017 is not going to be a global Lutheran get together at those chapel doors to celebrate. The practical realities simply do not allow for that. However, many communities of the 80 million plus Lutheran worldwide church will be making trips at various times during that year. The trip that I am currently on is an advance trip for about 50 leaders considering bringing groups in June of 2017. The gathering then should have 500-600 people with ample opportunity for worship, service, sightseeing, learning, and adding on adventures before and/or after if you choose. More on this soon!

An even bigger question, is how are we Lutherans going to observe this big milestone locally? Already the wheels have been turning with various thoughts to recognize our musical heritage, perhaps a speaker series as well? Also, is this an observance that takes place with our local Catholic sisters and brothers? There are many, many, ideas and exciting possibilities! For more information on how the Lutheran World Federation is encouraging its member churches, like our ELCA to observe this anniversary, please see <https://2017.lutheranworld.org>

This is an exciting time to begin thorough planning to make it a special year and event. It is an opportunity to build ourselves up as a congregation and a community, but more importantly, it is an opportunity to engage our community and continue the reformation work in the wider church.

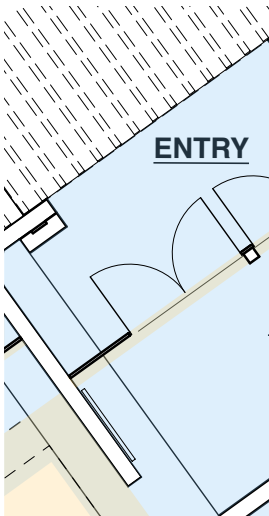
More to come!

Peace,

Rev. Matthew A. Smuts, pastor



page 4



page 16



page 9



page 13



page 10

---

## 104! LUKE

Adult Forum explores the Gospel of Luke in November

---

## 105 CALL COMMITTEE

Completing the MSP - moving forward

---

## 107 THE GOOSE IS GETTING FAT

And you know what that means...

---

## 108 MUSIC 'TIL MAY

The new Grace concert series continues with a Messiah Singalong on December 5

---

## 110 SUNDAY SCHOOL

This Sunday...every Sunday

---

## 112 APPLES, DOUBLES, AND LAKES

Space still available in some of our preschool classes

---

## 113 DO YOU JamBOOree?

One of our favorite events of the year!

---

## 116 THERE WILL BE A TEST

Take a peak at the current plans for the new narthex

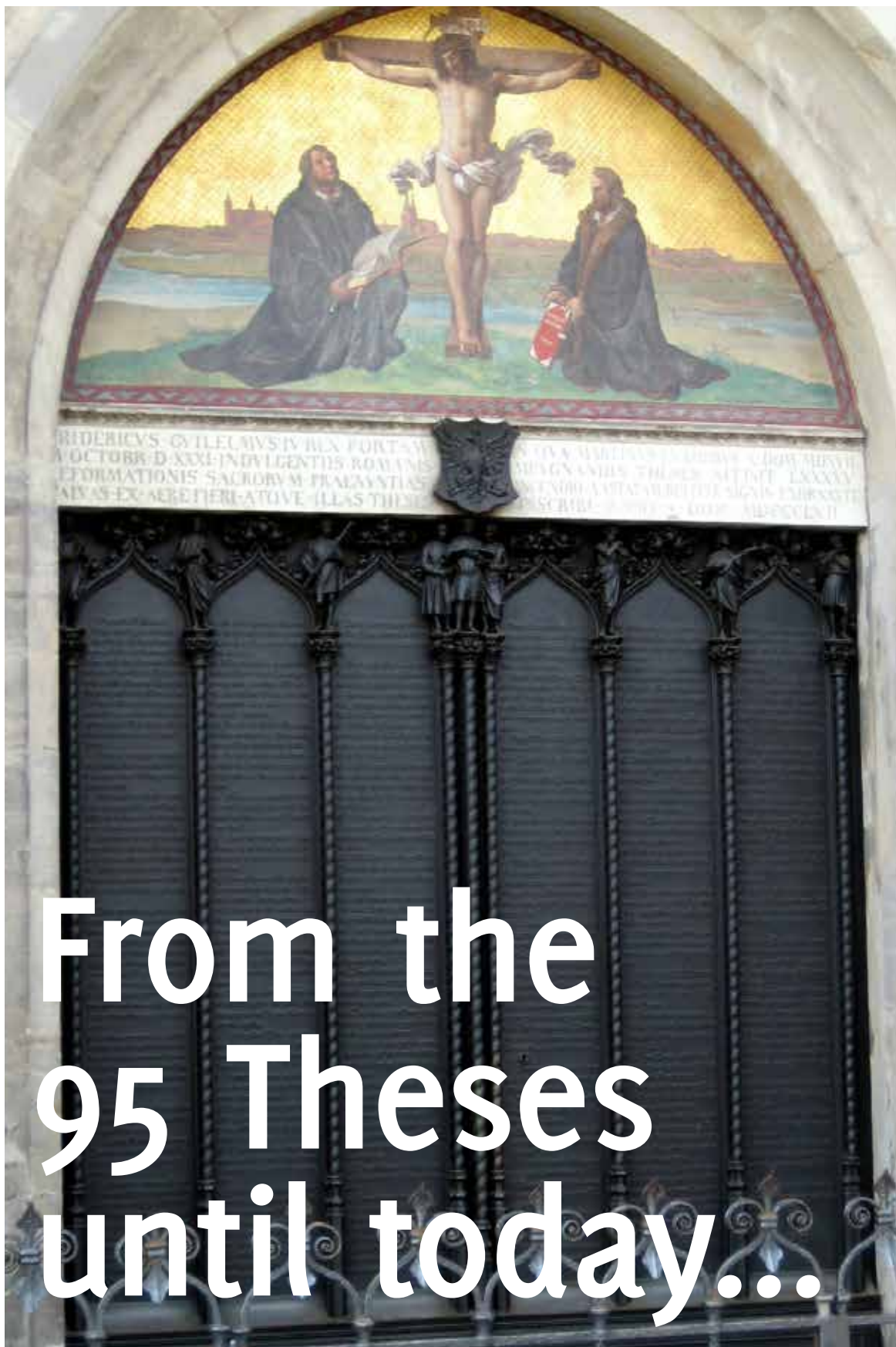
---

## 118 INTERFAITH THANKSGIVING

This year the Faith Leaders of Palo Alto invite you to celebrate at Congregation Etz Chayim

### COVER PHOTO

*A plethora of princesses: JamBOOree 2014*



# From the 95 Theses until today...

...“of all the four evangelists, Luke makes concern for the poor most central to Jesus’ message.”

**A**DULT FORUM CONTINUES the conversation about the Reformation Heritage through the end of October! Recent sessions have focused on preaching and music in the Reformation, and have helped participants think about the Lutheran heritage as shaping not just what we believe but what we hear, see, and do. Our final sessions though the end of October will inaugurate reflection on the upcoming celebration of the Reformation’s 500 birthday in 2017. We’ll hear about Pastor Matt’s trip to Germany to scout out possibilities for a congregational trip to the land of Luther to mark the occasion, and talk about what the Reformation means after 500 years. Join us even if you haven’t attended the earlier sessions! Adult Forum meets from 9:45-10:30 in the Chapel next to the library.

Speaking of the library, be sure to check out the display of videos and books about the Reformation on the table next to the couch. Thanks to our library committee for augmenting our Reformation series with these materials to extend our learning!

On November 1 guest speaker Pastor Brad Gee will lead Adult Forum on Lutheran Higher Education, with a focus on seminary education. Gee is the Vice President for Advancement at Trinity Lutheran Seminary in Columbus, Ohio, and he will also preach in worship that day.



The rest of November the topic in Adult Forum will be the Gospel of Luke. Be there on November 8 and get an early start on the Christmas story and more! Spoiler alert: poverty and wealth are major themes in the Gospel of Luke, and of all the four evangelists, Luke makes concern for the poor most central to Jesus' message.

If you are looking for a way to practice care for the needy in our community, consider joining a team of fellow Grace members who serve the Breaking Bread meal one Tuesday a month. The work is rewarding, and involves preparing a few salads and serving an already-prepared hot meal. Volunteers, whether short- or long-term, are really needed. We are also looking for people who would be willing to come in one Tuesday per month for about an hour and help clean up after the meal. In you would like to volunteer to serve or clear, or if you'd like more information, please contact Fran Harris through CCB. ■

---

Barbara Pitkin, Geri Horsma,  
Fran Harris, Sabine Kabel-Eckes

## Breaking Bread Meals Served each Tuesday at Grace from 5-6 pm

### Grace Lutheran Prep/Serve Dates:

- **October 20 | 4-6**
- **November 24 | 4-6**
- **December 29 | 4-6**

Contact: Linda Gueths-Pomeroy  
(slpomeroy@aol.com)

- **October 27 | 4-6**
- **December 1 | 4-6**

Contact: Pastor Matt  
(pastormatt@gracepa.org)

### Grace Lutheran Clean-up: volunteers needed every week

Contact:  
Frances Harris (frharris5@aol.com) or  
Sue Koepfgen (skoepfgen@gmail.com)



#### TOP LEFT

*"Thesentür" (the "Door of the Theses") memorial at All Saints' Church (Schlosskirche) in Wittenberg*

#### BOTTOM LEFT

*The Rev. Bradley A. Gee*

#### BOTTOM RIGHT

*A 3rd-century AD Greek papyrus of the Gospel of Luke "P. Chester Beatty I, folio 13-14, recto" by Unknown - Chester Beatty Library, Dublin, Ireland[1] [2]. Licensed under Public Domain via Commons - [https://commons.wikimedia.org/wiki/File:P\\_Chester\\_Beatty\\_I\\_folio\\_13-14\\_recto.jpg#/media/File:P\\_Chester\\_Beatty\\_I\\_folio\\_13-14\\_recto.jpg](https://commons.wikimedia.org/wiki/File:P_Chester_Beatty_I_folio_13-14_recto.jpg#/media/File:P_Chester_Beatty_I_folio_13-14_recto.jpg)*

#### TOP RIGHT

*Luke, Evangelist*



# Greetings from your Call Committee!



We are all excited to be called to address this part of our Grace community ministry and are off to a productive start in calling our part-time Associate Pastor.

The Committee's first meeting was in early September. We took that opportunity to introduce each other, review our purpose, talk through the process, discuss first steps, and address the inevitable committee housekeeping items. We've since had a subsequent meeting with Pastor Katy Grinberg on September 21. She is the assistant to the Bishop in the synod and our dedicated contact for this process. She reviewed the Synod's procedures and recommendations for the process.

Our first significant task will be completing the Ministry Site Profile (MSP) for the Synod. That document will help the Synod better understand our needs so they can recommend candidates to us. The MSP gathers information on the church and who we are, our vision for mission, leadership needs, and description of the role. We will be competing this over the next few weeks, drawing

from a number of resources, including the Vital Signs Church Assessment Tool report that we completed last year as part of the Capital Campaign.

Once we submit the information through the MSP, the Synod will be able to recommend candidates for our consideration and interview. A part-time associate role may elicit a limited number of candidates, and we will carefully consider each based on their own gifts.

It is the early days yet, but we are hoping this can be a somewhat straightforward process, and that the Committee will have recommendations in the next couple of months. Please continue to pray for us and our congregation (and the prospective candidates!) as we take this journey together. We look forward to sharing more good news with you all soon! ■

Peace,  
Mark Cravens and Nate Calhoun,  
Committee Co-Chairs

## CALL COMMITTEE

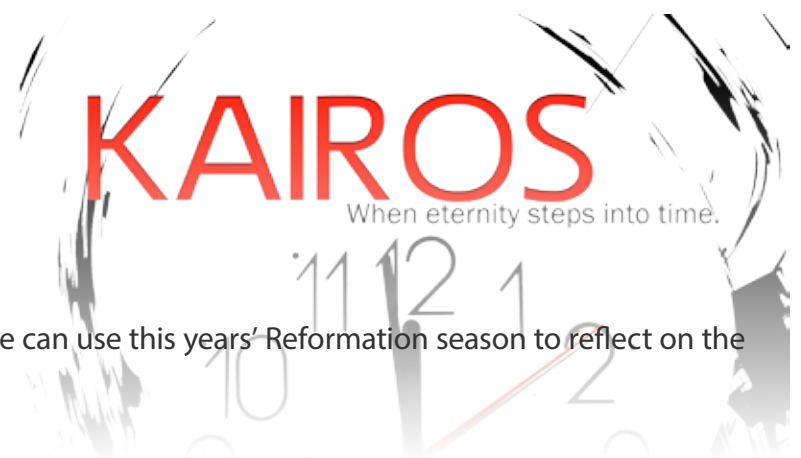
*Bob Northcott, Nate Calhoun, Pastor Matt, Mark Cravens, Sabine Kabel-Eckes, Martha Meyer, Lois Holl, Renée Banerjee Flemish, Evelyn Guernsey*

# Our Abundant Gifts

While few of us will nail a faith challenge to the church door on October 31, we can use this year's Reformation season to reflect on the wise use of the many gifts entrusted to us by God.

Perhaps we are teachers, medical personnel, track coaches, scout leaders, or hospice caregivers. Each of these roles comes equipped with a skill set provided by a loving God so that we can apply them in service to others both inside and outside our faith community. Why not create a list of other uses for our skills...a good Steward's list?

None of our gifts should be buried in a hole until the Master returns to the field. Instead, we are called to look for ways to benefit the stranger, immigrant, homeless, or hungry person among us. ■





## Christmas is coming!

I know, I know...I'm the first to complain when the Christmas trees pop up in stores in October. But our music groups at Grace like to be prepared, and we will soon start rehearsing our music for the Advent and Christmas seasons. If you'd like to be part of a musical ensemble during the holidays, now is the time to join! This is our rehearsal schedule:

- Children's choir (grades K-3): 4:30-5:15 pm on Wednesdays in the Chapel
- Children's choir (grades 4-8): 5:30-6:30 pm on Wednesdays in the Chapel
- Adult choir: 7:00-8:30 on Wednesdays in the Sanctuary
- Handbells: 4:30-5:45 pm on Thursdays in the Sanctuary

(It may be possible for the bell rehearsal to move into the evening on Thursdays. If you'd like to ring, but can't make the 4:30 time, please let me know.)

Let every heart prepare him room, and heaven and nature sing! ■



2	0	1	5
2	0	1	6

**GRACE NOTES LIVE ~ a concert series**  
 Grace Lutheran Church • 3149 Waverley Street • Palo Alto, California 94306 • (650) 494-1212 • www.gracepa.org

September

**19**

3:00 pm

**Sibelius for the Whole Family**

Jussi Makkonen, cello and  
Russamari Teppo, piano

October

**9**

7:30 pm

**The Choirs of Stavanger Cathedral, Norway**

Oddgeir Kjetilstad and Jorunn Lovise Husan, conductors

Ivan Sarajishvili, organist

December

**5**

2:00 pm

**Messiah Singalong**

(Christmas portion)  
Scot Hanna-Weir, conductor  
Tim Getz, organist

January

**10**

3:00 pm

**Sonos Handbell Ensemble**

James Meredith, conductor

February

**27**

4:00 pm

**Shades of Love: Beloved Opera Arias**

Angelique Zuluaga, soprano,  
and others

March

**19**

7:00 pm

**California Lutheran University Choir**

Wyant Morton, conductor

April

**17**

4:00 pm

**A Baroque Afternoon**

Angelique Zuluaga, soprano,  
and others

May

**22**

4:00 pm

**Annual Grace Music Spring Concert**

Grace Chancel Choir and friends

Grace Lutheran is a music-loving congregation! We have a congregation who sings enthusiastically (you!), choirs for all ages, and a talented handbell ensemble. We play host to numerous performances by musicians from outside the congregation throughout the year. And we have had very successful Grace Music Spring Concerts during the month of May for two years in a row...long enough to call it a tradition! This year, all of these things have been folded into one new, exciting package: Grace Notes Live—a Concert Series! With a great variety of programs scheduled roughly one afternoon or evening per month, there's sure to be something in this series for everyone. Programs will generally be 60-90 minutes in length, suitable for the whole family. Admission is by free-will offering. Donations will, in some cases, go directly to the performers, and in other cases will benefit the music program at Grace Lutheran Church.



Our series already has had its start with two Scandinavian programs. We celebrated the 150th anniversary of the birth of Finland's most famous composer, Jean Sibelius, in September. We had well over 100 people in attendance, including a very large representation of our local Finnish community. Several Finnish musicians, highlighted by Jussi Makkonen on the cello and Russamari Teppo at the piano, exquisitely introduced us to the music of Sibelius. Then, this month, we heard choral music by Norwegian composers sung by the choirs of Norway's Stavanger Cathedral.

But there's much more: On December 5, we will have a Sing-along of the Christmas portion of Handel's Messiah. With no rehearsal, but only a spirit of adventure, anyone who wants to sing along with our choir will be most welcome. We will have scores available, but bring your own if you have one! We will be directed by Scot Hanna-Weir, a member of Grace who is also the conductor of the choirs at Santa Clara University and the Santa Clara Chorale. Scot is a terrific musician and loads of fun as well, so it should be a very memorable afternoon. On January 10, we will hear a concert played by the Sonos Handbell Ensemble. Sonos is one of only a very few professional handbell groups in the entire country, and our own Gretchen Rauch is one of its members. This "Twelfth Night" performance will feature music from the ensemble's December East Coast tour.

The programs continue in February, March, April, and May with more exciting offerings. See the sidebar to this article for a complete calendar. Flyers listing the entire series are also available here at church on the racks outside the worship space. Please take one or several, and give them to anyone who might be interested in hearing some great music. We hope to see you here! ■

Tim Getz, Director of Music Ministry





December  
**S5T**  
 2:00 pm

**Messiah Singalong**  
 (Christmas portion)  
 Scot Hanna-Weir, conductor  
 Tim Getz, organist

Dr. Scot Hanna-Weir leads the Santa Clara Chorale as their artistic director and is also Director of Choral Activities at Santa Clara University, where he oversees the choral program, directs the SCU Chamber Singers and Concert Choir, and teaches other courses within the music department. As a conductor, singer, pianist, and teacher, Scot Hanna-Weir is known for his insatiable desire for artistic excellence and his deep connection to the personal joy of music making. Comfortable in a variety of genres and styles, Hanna-Weir is a frequent collaborator as conductor, clinician, singer, and pia-

nist with soloists, choirs, composers, and ensembles from a variety of backgrounds and traditions.

Dr. Hanna-Weir holds a Doctor of Musical Arts in choral conducting from the University of Maryland, a Master of Music in choral conducting from the University of Wisconsin, and a Bachelor of Music in choral/general music education from the University of North Carolina at Greensboro.



**A Concert for  
 Twelfth Night**

January  
**S10N**  
 3:00 pm

**Sonos Handbell  
 Ensemble**  
 James Meredith, conductor

On the cutting edge of a 300-year old medium, Sonos Handbell Ensemble has toured 24 years from coast to coast and half way 'round the world bringing their unique virtuosity and compelling visual presence to astonished audiences of young and old. By joining forces with Grammy winning artists like composer Libby Larsen, the Kronos Quartet, the San Francisco Girls Chorus and Grammy-nominated mezzo-soprano Frederica von Stade they have expanded the range and reach of the instrument far beyond what most thought possible. Appearances on PBS, Japan's NHK, NPR, classical stations around the world plus teaching workshops, masterclasses and their multiple recordings have raised the bar for what is expected from handbell artists. Garrison Keillor said it best on "A Prairie Home Companion".....

*"Thanks, Sonos, for raising the level of our little family radio show from the comic to the cosmic to the something beyond."*

A native of North Carolina, Sonos Artistic Director James Meredith received his Bachelor of Arts degree from the University of North Carolina at Chapel Hill and a Master of Fine Arts from Tulane University. He has been a musical partner with mezzo-soprano Frederica von Stade and dramatic soprano Olivia Stapp. As a solo pianist, vocal and instrumental accompanist and conductor in America, Europe and Asia, his work has brought him into contact with such artists as Elly Ameling, Elizabeth Schwarzkopf, Eleanor Steber, Evelyn Lear, and Gerald Moore for whom he has played masterclasses. Recent concerts with Ms. Von Stade include an appearance on Garrison Keillor's "A Prairie Home Companion" reaching a National Public Radio audience of over two million listeners. He has been conductor of the Oakland Symphony Chorus, been on the faculty of Merritt College and taught master classes at Holy Names College and San Jose State University. As a trained, professional musician in the classical musical community, he brings a high standard to his work with handbells.



# Advent Festival!!

NOVEMBER 22

IMMEDIATELY AFTER THE 10:45 AM SERVICE

Prepare for Advent and Christmas after church by making an advent wreath, crafting, eating warm soup, and getting your fill of lefse!! This is a lunch-time event for the whole Grace family, all are welcome. We gather in Brown Hall for warm homemade soup, fresh lefse made by our high schoolers, crafts for all ages, wreath making, and lots of great conversations. Don't miss out. We will also make tags for the Angel Tree and prepare our care packages for our college youth! We hope to see you there. ■

## Sunday School

Every Sunday in the Sanctuary at 9:30 am:

- Children join us at the front of the Sanctuary and put a sticker on our attendance chart!
- Every Sunday we begin with singing and music with our Director of Music Ministry, Tim Getz.
- Offering is a big part of learning and growing in Sunday School. This fall we are collecting SOCKS to support health and wellness and warm toes for those in need. They will go EHP in East Palo Alto.
- Class dismissal: Teachers join us for opening and then leave with their classes for a morning jam-packed full of activity and fun!

We hope to see you soon!

## Little Lutherans

Gather weekly in this Parent-led and -taught class, a growing faith community for little ones and parents, now meeting in the Preschool.

## Confirmation

We have added a new class at 4 pm on Wednesdays for those youth who were having trouble making it at 7 pm. We have the biggest Confirmation class we have had in years, 23 students! Wow, what a great start to this year! Our next Mentor Sunday is November 1.

## Middle and High School

Middle and high schoolers all play a huge role in our JamBOOree celebration! Our middle school youth are in charge of our Trick or Treat house—they hand out all the candy for our little trick-or-treaters. Our high school youth are responsible for our Haunted House!

After JamBOOree winds down, we gather in the Youth Room for a Halloween Movie Night! Middle School Youth are welcome to stay for Movie 1, a PG rated Halloween movie. High Schoolers are welcome to stay for Movie 1 and Movie 2, which is a PG13 movie, usually a little scarier. As always, friends are welcome all night! ■

HE COUNTS  
*the* Stars  
 AND CALLS  
 THEM ALL BY  
*name* Psalm 147:4

Camping is one of my absolute favorite things to do. I didn't grow up camping, but discovered it along the way. It is hard to describe what I love about it because it is so many things. One of my favorite parts of camping is being outside in God's creation, surrounded by beauty, and under the multitude of stars.



Where I grew up on Kauai, I could often see lots and lots of stars—there's not a lot of light pollution in the mountains where I lived, and often there are perfect warm nights with clear skies to view them. I never learned much about stars, but love to just gaze at their simple and yet complex

But then I am reminded of God and God's creation, another important part of why I love to camp. Everywhere you look you see something beautiful that God created. The trees, the rivers, the ocean and its waves, the sunshine through the leaves, the stars, and even us. God created us and loves us. This is incredibly big, even bigger than the universe that, as I sometimes gaze upon, can make me feel so small. I am small and those stars are far away, but we were both created for a purpose, we both are called to shine.

beauty. They have the ability to make you feel so small in this enormous world and galaxy we live in.

A few years ago, I was camping at Yosemite for the first time, and we went to look at the stars from a lookout point. I had never seen stars like these. I remember looking up at a large cluster of stars and asking my friend what it was. She replied, "That is the Milky Way." Somehow, I had never seen it so brightly or so obviously before. I was in awe and couldn't look away. Such beauty and such splendor. A whole new spectacular view opened up to me. I felt like I was seeing something so remarkable in that moment, but in reality, it was something millions of people have observed for many, many years.

The beauty of the stars is reflected in each honest conversation I have with a youth or a child as they share their hopes and struggles. The vast expanse of the stars is reflected in the body of Christ and the community of saints. The light of the stars is shown in the hearts and minds of God's children: You and me, all of us, just like those stars, are meant to shine for a purpose.

Stargazing always seems to be part of camping, laying there and watching the shooting stars always seems so magical. Yet those stars are there every single night of our lives—and we often never even notice them. An entire sky full of little stars surround us and we never take a second to look up. Maybe that is why camping is so special: it is time set apart, time to slow down and do the things we never take time to do.

God counts the stars and call them by name. Psalm 147:4 ■

The stars, besides being so beautiful, often leave me feeling tiny and unimportant in this world. I am just one little person looking up at this galaxy, this vast Milky Way of stars in this universe.

*Elizabeth Hood*



# CLASSROOM

**ABOVE**  
*Grace Lutheran  
 Preschool decorated  
 for October*

**W**E HAVE BEEN up and running (and I do mean running!) for a month now. Lots of "old" families and new, making apple pies from the apples from the preschool tree! I don't know why, but our apples are amazing. Must be all the children climbing it and giving it love.

We have been tracing and painting the children's doubles: They are so creative! It's always fun to see those happy faces.

During the summer, we did some much needed work on the school. We put new carpet in the room, refinished and painted the wooden structure, and put in a French drain so we don't flood when El Nino hits. We will miss the lake in the yard...kind of. It was always fun to put on boots, sail boats, and play in the lake. It was fun for us, but not so fun for the old chickens.

The preschool playyard is available for children under the age of seven to play in (the structures are designed for very young children), but children must be supervised at all times when in the yard. And please be sure to put anything away that you get out so that the yard is ready for preschool again the next day.

Halloween is coming...and we are beginning to make decorations. This year, we will have a pumpkin patch in the play yard. It will be a month-long project with lots of children's input. So make sure you take a look, peek over the fence or come on in.

We have a few openings in the Tuesday/Thursday 9-11:30 class and the Monday/Wednesday/Friday 12:30 to 3:15 class. If you know of any 3-,4-, or 5-year olds who are looking for a play-based program, tell them to stop by. Visitors are always welcome. ■

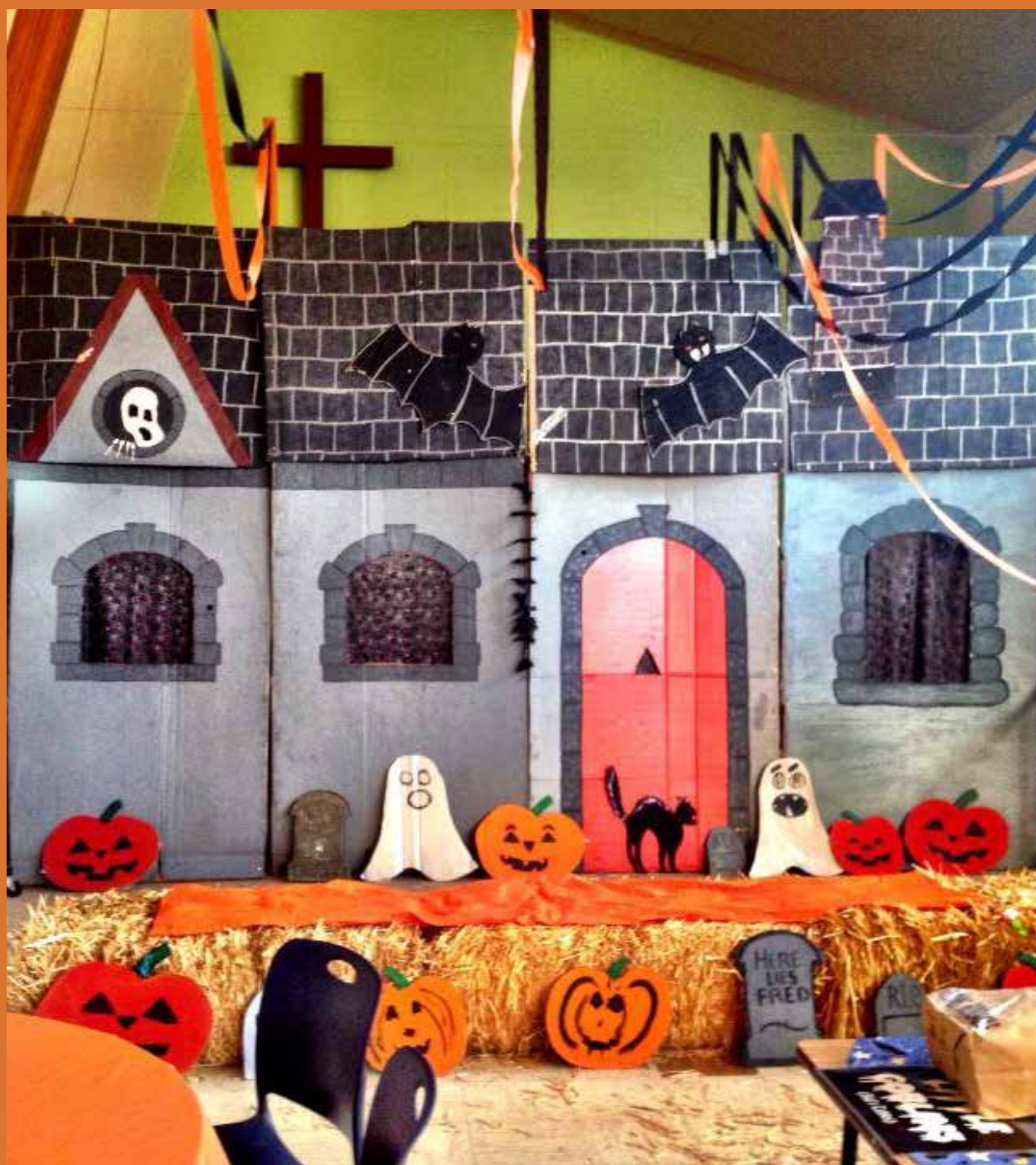
*Penny McDermott*



# JamBOOree

**Halloween Potluck and Costume Party**

**FRIDAY, OCTOBER 30 | 6 - 8 PM**



You are invited to the annual Grace **JamBOOree!!**

If you have never been to JamBOOree before, it is a potluck/party with a Fall/Halloween Festival theme—fun for the whole family!

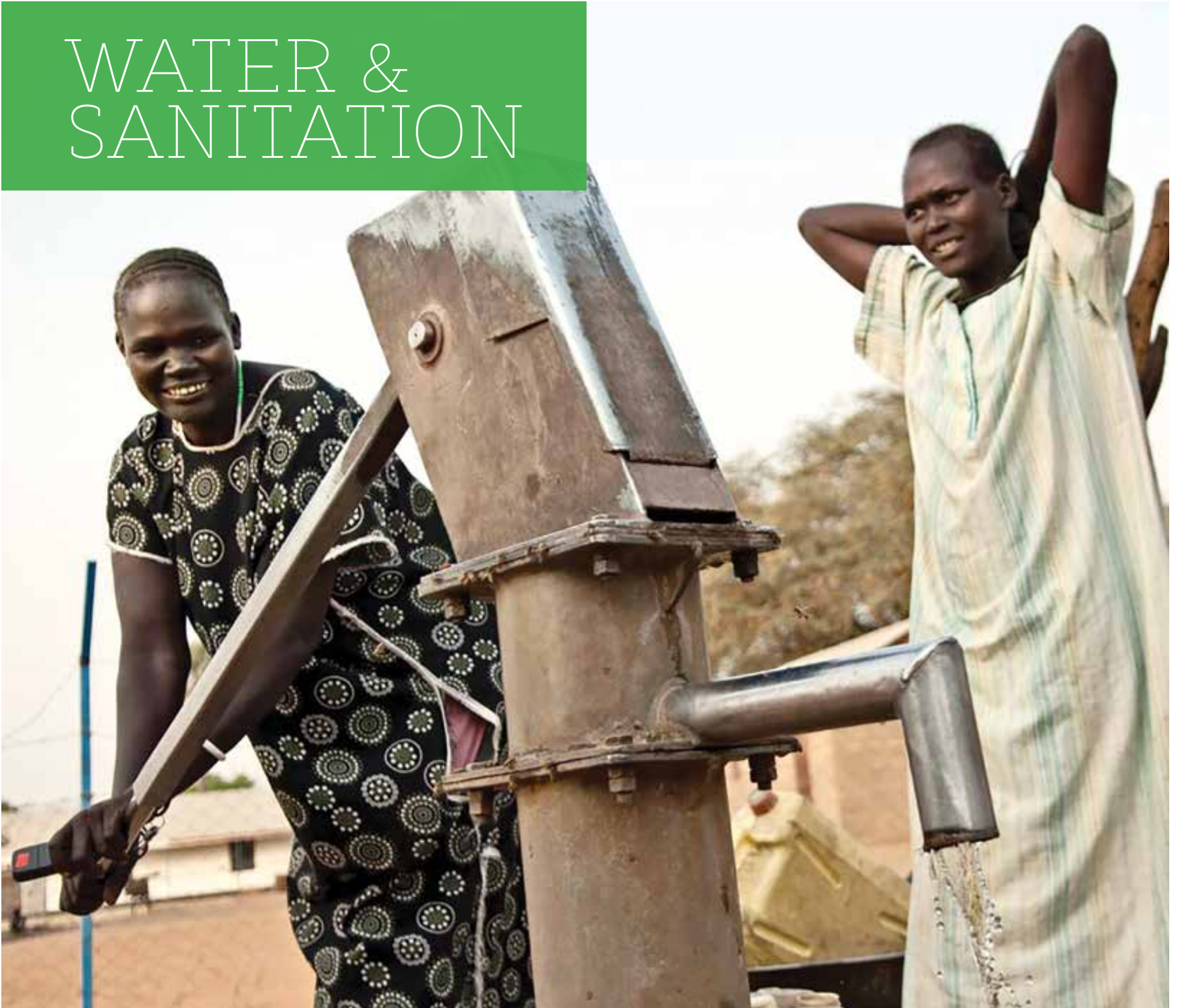
Bring your family, friends, and neighbors! Parents can enjoy a seat outside around the fire pit while the kids check out the Haunted House provided by the High School Youth!

Other activities include:

- Trick or Treat House and Games for children of all ages!
- Guessing Jars full of mysterious treats.
- Costume Parade for everyone who wants to dress up!
- Arts and Crafts and lots of sweets for all to enjoy.

**DON'T MISS THIS PARTY!!**

# WATER & SANITATION



## ELCA World Hunger



*Water for drinking, growing crops, sanitation and hygiene, paired with ongoing health education, training and maintenance helps create healthier families and stronger economies.*



“This borehole is not only about drinking water, it is about food, it is about money, it is about the lives of the 352 pupils and teachers as well as the continuity of this institution.”

- JONAS MULEYA, AGRICULTURE TEACHER  
AT SIYOKA SECONDARY SCHOOL



The Evangelical Lutheran Church in Zimbabwe is one of many global companion churches responding to hunger with local context, expertise and ingenuity. Your gifts to ELCA World Hunger support a worldwide network of Lutheran churches in the important work of identifying and tailoring solutions that can put a halt to hunger in the long-term.

## Quenching more than thirst

**E**ighty percent of the population in Zimbabwe lacks access to clean water, with even fewer with adequate sanitation. In Beitbridge, Zimbabwe, home of the Siyoka Secondary School, the community's sole source of water was contaminated with waterborne pollutants. With no other option, the people of Beitbridge walked two miles one-way to retrieve this water. It was the main responsibility of the students of Siyoka Secondary School to walk, collect and carry water back for their family's use.

Waterborne disease is the leading cause of death for the people of Zimbabwe. In response, Lutheran Development Services, supported by your gifts to ELCA World Hunger, worked shoulder-to-shoulder with the community to identify a long-term solution. A new borehole, centrally located in the community, was constructed and has

provided access to safe drinking water for the students, teachers and community members of Beitbridge.

The borehole has had a ripple effect in the community. “Water has come to our doorstep,” says Jonas Muleya, an agriculture teacher. “Latrines are cleaned and diseases like cholera, typhoid and dysentery have been kept at bay.” The nearby borehole has also spared students the time and labor once associated with retrieving water – school attendance and the health of the students has never been better.

The benefits have extended beyond health and education. Access to fresh water has made agriculture a possibility for the community. Crop irrigation has led to large harvests. “We teach practical agriculture, sell vegetables and eat vegetables,” says Jonas, while pointing at the garden and smiling. “Life has changed here.”

# Building Team: Narthex Update

For this Grace Notes edition, I decided to insert a picture in place of the 1,000 words you typically encounter in the Building Team report. It is the same image that first appeared in the bulletin on Rally Day, but perhaps you didn't have an opportunity to appreciate some

of its (many) finer features. There are also some comments and questions related to the figure that are intended to improve your skills as a **Feature Finder**.





**Feature Finder Questions**

- 1) What is the area of the new narthex compared with the present (dotted red lines) space?
- 2) How does the new ENTRY compare with our present two single-entry doors that face the parking lot?
- 3) Since when is a narthex called a LOBBY?
- 4) The roof over the area outlined by the dashed line (beige shading) in the center of the figure is an extra 3 feet above the surrounding roof, and the walls of that section will be mostly windows. What's that called?

**Extra Credit**

- 5) Can you find six doors that will open wide to blend indoors and outdoors?
- 6) Can you find the children's reading/activity table in the LIBRARY?
- 7) Can you find the three-segment, see-through pocket doors able to close off the LIBRARY if desired?
- 8) Can you find the hot water faucets in the COFFEE BAR and restrooms?
- 9) How will we enter the narthex through that large brick wall?

Got more questions on project features or Team operations? Please don't hesitate to let us know what's on your mind—it's your lobby, too!



**Answers**  
 1: Twice the size  
 2: Twice as welcoming, at least!  
 3: Since a City staffer asked, "What's a narthex?"  
 4: A clerestory – "clear" story"  
**Extra Credit**  
 8: Not yet, but they'll be there!  
 9: Get a running start!

# No Sale!

Martha Meyer

A theme of the Reformation Celebration is "Not for Sale." Five hundred years ago, this meant that forgiveness of sins was not for sale, with the marketing of indulgences. But for Social Ministry in 2015, this means human beings are not for sale. Forced labor, commercial sexual exploitation and involuntary domestic servitude are examples of this. Because traffickers prey on vulnerable individuals, this crime is both widespread and insidious. The Bay Area's major harbors, airports, economy, and large immigrant population all fuel trafficking, according to the California alliance to Combat Trafficking and Slavery Task Force. Local agencies expect a surge in this predatory activity with the Super Bowl in Santa Clara next January.

At the urging of the Social Ministry Committee, Grace's Church Council recently adopted a resolution encouraging city and county governments to combat human trafficking through staff training, assistance in identifying vulnerable populations, and legislative advocacy. Yes, we are our brothers' and sisters' keepers. You may report any suspicious activity to your local police or sheriff department. ■

# What is Creation Stewardship?

Bill Cutler

Creation stewardship is a matter of mindfulness. When I am mindful, I realize that I live all the time in the environment, the environment supports me, and whatever I do affects the environment, for good or for ill. When I harm the environment, I harm myself. As a person of faith, I am aware that the environment is God's creation. When I am disrespectful of the wondrous and beautiful environment, I am thumbing my nose at God.

What I do each day directly controls only the lesser portion of my impact on the environment. I can conserve energy, convert from fossil fuel to carbon-free energy, buy local and only from sustainable and socially just sources and only what I really need, use stuff until it's worn out, and fix or recycle it instead of throwing it away, but that's not the whole job. Many act on my behalf but beyond my control, in extractive industry, agriculture, manufacturing, transportation, information technology, health, and energy, all impacting the environment. So, to protect the investment I make in sustainable living in my own life, I am active in supporting good environmental practice elsewhere by voting, writing letters to the media and political leaders, and participating in environmental organizations.

Good News! The reformation in clean energy is about to break out! The technology is ready and the economics are favorable. It just needs a push from aware people to get the engine of transformation kicking over. For a list of where you can participate locally, go to: <https://docs.google.com/document/d/1aF6566WqIBd98RrDrd7yUcjWCuydK8jYkw9GGCZQlc/edit?usp=sharing> ■

# Continue the exploration of the Reformation on your own..



Books and videos about the Reformation and its leading movers and shakers are being featured in the library this month, in connection with the Adult Ed. series. The library has an extensive section (L for Lutheran) on Luther and Lutherans, including the Complete

Works of Luther, but also plenty of biographies, interpretations, and condensed versions of Luther's writings, and Lutheran theology. ■

Mary Ashley



## New Member!

Grace's Endowment Committee is happy to welcome Aarika Riddle as a new member of this committee. As the Director of Advancement and Marketing for Adolescent Counseling Services for eight years, she is very qualified for the work of promoting the congregation's endowment fund. Aarika is well-known at Grace for being the Chair of our successful Capital Campaign. Aarika was a communications and sociology major at California Lutheran University. She learned the nuts, bolts, and joy of her future profession by having an on-campus job in the Development Office for three years.

She joins Amrette Butler, Dan Logan, Martha Meyer, Don Ostrus, Rev. Cora Scheel, Rev. Matt Smuts, David Vroom, and Don Zepp on the committee. Feel free to contact any of these members for question you may have about joining the Heritage Society.

## Annual Palo Alto Community Interfaith Thanksgiving Service

Sponsored by Faith Leaders of Palo Alto

### The Blessing of Water

*Balancing God's Gift and Our Responsibility*

Sunday, November 22, 2015, 7:00 p.m.

Congregation Etz Chayim  
4161 Alma Street  
Palo Alto, CA



Featuring:

Gordon Stewart Peninsula Trombone Choir  
Storytellers - Tom and Sandy Farley  
Leaders from the Jewish, Christian, Muslim,  
Buddhist and Hindu Faith Communities  
Dancers from a variety of cultures

For more information contact: Rev. Margaret Boles - mbolescovenant@gmail.com  
Rabbi Shelley Lewis - shellyj.lewis@gmail.com

COUNCIL

Dave Bohn  
STEWARDSHIP, SOCIAL MINISTRY

Kimberly Badtke  
ENDOWMENT

Nate Calhoun  
CHILDREN'S EDUCATION

Ray Ernenwein, President  
FINANCE

Gail Foelsch  
PRESCHOOL, BUILDING TEAM

Twila Forbes  
WORSHIP AND MUSIC

Jane Garvey  
CMT BOARD, SOCIAL MINISTRY

Elise Grangaard

Sabine Kabel-Eckes  
ADULT ED AND SPIRITUAL FORMATION

Holly Lucke, Vice President  
PERSONNEL

Don McElravy  
STEWARDSHIP

Jim Schlatter  
BUILDING TEAM

Katy Siegel, Secretary  
YOUTH MINISTRY

# Council Notes

This fall, the Church Council has focused on getting the new programming year off to a strong start, as well as ensuring both the campus master plan and call committee projects continue to make good progress. And, with an eye towards next year's 500th anniversary of the Reformation, we're starting to gather information and formulate ideas about how the Grace Lutheran community can commemorate this special occasion.



In early September, the Council was happy to help host the annual Rally Day picnic. It was great seeing the

wonderful fellowship among all the activities, ranging from the bounce house, face painting, and croquet. We hope everyone can take advantage of Grace's many offerings in the coming year—opportunities ranging from Sunday school to worship and music, youth programs, and many more.

In the coming weeks, you will be hearing from the Building and Call Committee teams as they report on their important work. The Building Team is working diligently with Palo Alto city officials and the architect to finalize specifications of the construction proposal. The Call Committee has kicked off its process, which includes documenting Grace's congregational profile so we can represent ourselves and our needs well to applicants.

Lastly and with regard to finances, we continue to monitor income relative to expenses, and are pleased to report that we are running a healthy surplus, which

bodes well for the rest of the year.

Peace,

## College Student Address Request

College: ?  
Address: ??  
Updates: ???



## It's that time of year again!!

We need to know where your College Youth are: what are their **NEW** addresses? Please send them in an email to [office@gracepa.org](mailto:office@gracepa.org) (or login to CCB and update their address) so that we can make sure to send them a care package this fall. Thanks so much to Anne Ritchie, who will help to put our packages together this year! We love staying connected to our college youth and knowing what they are up to in the world! Feel free to send an update! ■



SOUTH PALO ALTO  
**food closet**

670 East Meadow Drive | open Monday, Wednesday-Friday, 10 - 2

## Variety

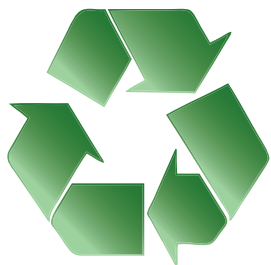
As we head into the cooler weather, we hope we will have plenty of the kind of foods we give out a lot as we lose the warm weather. These include high protein soups, Spam, Vienna Sausage, and pop top meals. Of course, all the condiments and kid cereals are in high demand all the time. Some of the foods that come in are not known to some of us, but we have a wide-enough variety of ethnic groups in our volunteers that someone knows what it is! And there is always someone among our diverse clientele who thinks it is a big treat, even if many of us cannot read what it is!

Thanks so much for thinking of the needs of the South Palo Alto Food Closet! ■

3149 Waverley Street  
Palo Alto, CA 94306  
650.494.1212  
www.gracepa.org



# Grace Lutheran Church



Printed on 30% post consumer recycled paper

## Sunday Worship

8:30 & 10:45 am

«»«»«»«»«»«»

Also broadcast on Cable 30

Sundays 11 am | 8:30 pm

Mondays 12:30 pm



**Evangelical Lutheran  
Church in America**

God's work. Our hands.  
[www.elca.org](http://www.elca.org)