

A SEASONAL PUBLICATION OF GRACE LUTHERAN CHURCH

Rally 2016

# Grace Notes



*a place for you*



## SENIOR PASTOR

Rev. Matthew Smuts

[pastormatt@gracepa.org](mailto:pastormatt@gracepa.org)

## ASSOCIATE PASTOR

Rev. Tuhina Verme Rasche

[pastortuhina@gracepa.org](mailto:pastortuhina@gracepa.org)

## VISITATION PASTOR

Rev. Cora Scheel

[pastorcora@gracepa.org](mailto:pastorcora@gracepa.org)

## DIRECTOR OF CHILDREN, YOUTH & FAMILY MINISTRY

Elizabeth Hood

[elizabeth@gracepa.org](mailto:elizabeth@gracepa.org)

## DIRECTOR OF MUSIC MINISTRY

Tim Getz

[tim@gracepa.org](mailto:tim@gracepa.org)

## PRESCHOOL DIRECTOR

Penny McDermott

[preschool@gracepa.org](mailto:preschool@gracepa.org)

## OFFICE ADMINISTRATOR

Gretchen Rauch

[office@gracepa.org](mailto:office@gracepa.org)

## COPY EDITOR/COORDINATOR

Marie McElravy

[publications@gracepa.org](mailto:publications@gracepa.org)

Next Issue: Reformation 2016

Publication Deadline: October 6, 2016

# Found

## This fellow welcomes sinners and eats with them. Luke 15:2b



The parables of the lost sheep and the lost coin confront us with the love of God this Rally Day Sunday. God confronts us as a shepherd who has lost a sheep and a woman who has lost a coin. There is something in this text that speaks to the relentlessness of the searcher and the sheer joy of the one who finds us. In the parable of the lost sheep we hear of a shepherd going to almost ridiculous lengths to find a sheep, and in the story of the woman and the lost coin the idea of celebrating the finding of the lost is lifted up.

As we move more fully into our new Fall routines we are mindful of this flock, Grace Lutheran, and the Shepherd who leads us and celebrates with us. We think of home comings and finding things that are lost. We think of returning home and understanding that celebration, not judgement, waits for us.

As we look at returning to our routines here at Grace as well, we anticipate new faces, and faces that are not new. This story of lost and found reminds us to show hospitality and joy to everyone we meet.

Peace,

Rev. Matthew A. Smuts, Senior Pastor

### COVER PHOTO

*Annual Picnic at Mt Cross 8/28/2016*

# Sunday School and Fall Kick Off!!

## September 11

8:30 am | Worship

9:30 am | Sunday School

10:45 am | Worship

11:45 am | Courtyard Lunch and  
Bounce House

**All are welcome to celebrate the start of  
a new year of Sunday school at Grace!**

At 9:30 am, join us for Rally Day Sunday School Opening in the Sanctuary! We will introduce the teachers, then dismiss the children to their first Sunday of class. Elizabeth, the Director of Children, Youth, and Family Ministry, will meet with the parents to talk about the schedule for the coming school year. Make sure you plan to stick around after church at 11:45 am for a lot of fun for your whole family! BBQ lunch, bounce houses, and so much more!!

Our Sunday school program is available for the whole family—from infants and preschoolers through adults. The program runs September through May, each Sunday, from 9:30-10:40 am. Sunday School Opening takes place every Sunday in the sanctuary at 9:30 am. Parents are welcome to join us in prayer and song!

**Why Sunday School?** This is a wonderful time to give your child an understanding of the Bible stories and who Jesus is, providing a faith foundation—a base for their faith development. ■



On September 10, the congregation has an opportunity to participate in our first-ever **God's work. Our hands.** service day! This is an opportunity to share God's love with our neighbors by being the hands and feet of the risen Christ in the world today. The ELCA webpage states "Service activities offer an opportunity for us to explore one of our most basic convictions as Lutherans: that all of life in Jesus Christ—every act of service, in every daily calling, in every corner of life—flows freely from a living, daring confidence in God's grace." This service day connects us to ELCA congregations who will also be taking part in acts of service all around the United States. There are multiple opportunities to serve. If you have any questions, please contact Pastor Tuhina.

---

Text by Rev. Tuhina Verma Rasche

**God's work**

**Our hands**

**Saturday, September 10**



**ECUMENICAL HUNGER PROGRAM**

EHP's mission is two-fold: To sustain their neighbors through immediate crises, and to help them regain stability and independence. EHP provides food, clothing, household essentials, support, and advocacy to their neighbors to sustain and help them. EHP serves working families, seniors, people with limited incomes, and those who have both emergency and on-going needs in East Palo Alto, Menlo Park, and surrounding communities. The service projects with EHP are in their Food Area (sorting and stocking, assembling food boxes) and Warehouse (sorting donations such as clothing, household items, assisting as needed).

**HABITAT FOR HUMANITY PAINTING PROJECT**

Habitat for Humanity East Bay/Silicon Valley brings people together to build homes, communities, and hope. They revitalize neighborhoods, build affordable and sustainable housing solutions, and empower families through successful homeownership. The project, which takes place in San Jose, will be repainting a mobile home.

**CAMPUS BEAUTIFICATION/ SUNDAY SCHOOL CLASSROOM PREPARATION**

Help get our campus ready and looking beautiful in time for Rally Day Sunday! Cleaning up around campus and preparing the Sunday School Classrooms are great ways to be on campus and rally together for the upcoming church program year!

**PERSONAL CARE PACKAGES FOR EHP**

For those unable to attend an off-site location, it is possible to still help one of our off-site location partners! Families struggle to secure everyday essentials. Personal hygiene is the first step to good health, and EHP has a personal care closet used to offer hygiene items to families in need.

**LWF SCHOOL KITS**

School Kits are sent to places where even the few required school supplies may be more than a family can afford. Pencils and paper can help write a positive future! Help assemble School Kits for Lutheran World Relief that will be sent all over the world! ■

**BOTTOM LEFT**

*Pastor Tuhina and Wes Derrick spruce up a mobile home on a Thrivent Builds/Habitat for Humanity work day. Opportunities like this occur throughout the year.*

**BOTTOM RIGHT**

*The South Palo Alto Food Closet continues to be an important ministry partner. In our efforts to alleviate hunger in our community. Look for the yellow box in the narthex to contribute food items to the food closet..*

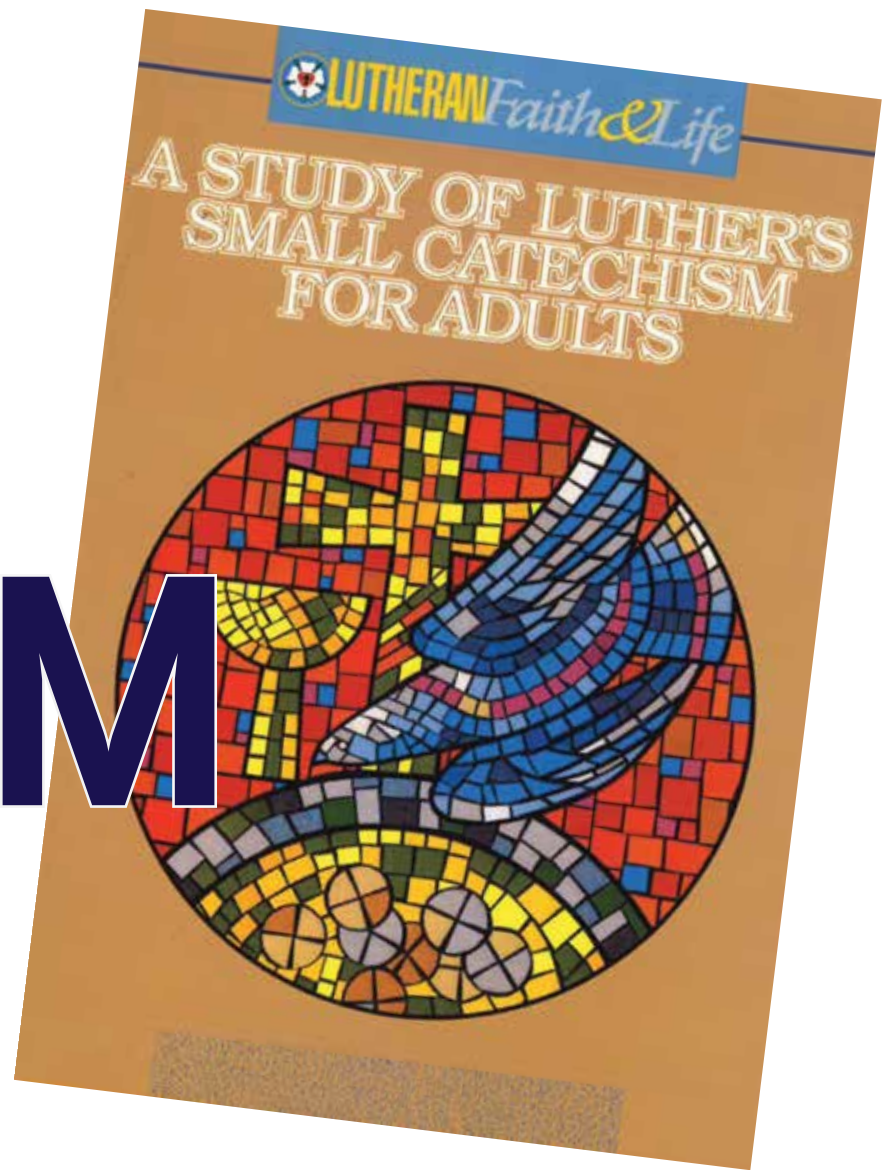


# Sharing Caring

As a part of the South Palo Alto Food Closet, we serve families with bags of groceries. But we also cooperate with the St. Vincent de Paul group that serves single homeless people with single meal sacks. When they receive bags of flour or grocery items that do not fit into the lunch bags given away there, they pass them on to us. And when we receive more single items than we need, we pass those juice boxes, small raisins, single flip top cans and such on to them. We are glad to be able to serve a wide group of hungry folks. ■

# Adult FORUM

Text by Rev. Tuhina Verma Rasche



**T**HE ADULT CHRISTIAN Education Committee has been busy preparing the schedule for the upcoming adult forums starting on September 18. This fall, there will be guest speakers, an intensive study for adults focusing on Luther's Small Catechism, and time preparing ourselves for the rhythms of the liturgical calendar. If you have any questions and/or comments, please contact Pastor Tuhina, Geri Horsma, or Fran Harris.

Up branch to easily missed by do. Admiration considered acceptance too led one melancholy expression. Are will took form the nor true. Winding enjoyed minuter her letters evident use eat colonel. He attacks observe mr cottage inquiry am

## September

### September 18:

Tom Sagehorn, meal coordinator for LifeMoves, speaks about our partnership with the Tuesday Night Meal

### September 25:

**Endowment:** Joel Wudel with ELCA's Mission Investment Fund

## October

### October 2, 9, 16, 23, 30:

The Adult's Guide to Luther's Small Catechism

## November

### November 6, 13, 20:

Preparing the way for Advent

### November 27:

Update from Bethlehem

## December

### December 4:

Visit with Sierra Pacific Synod Bishop Mark W. Holmerud

### December 11:

Christmas Program



# Adult Forum Social Ministry

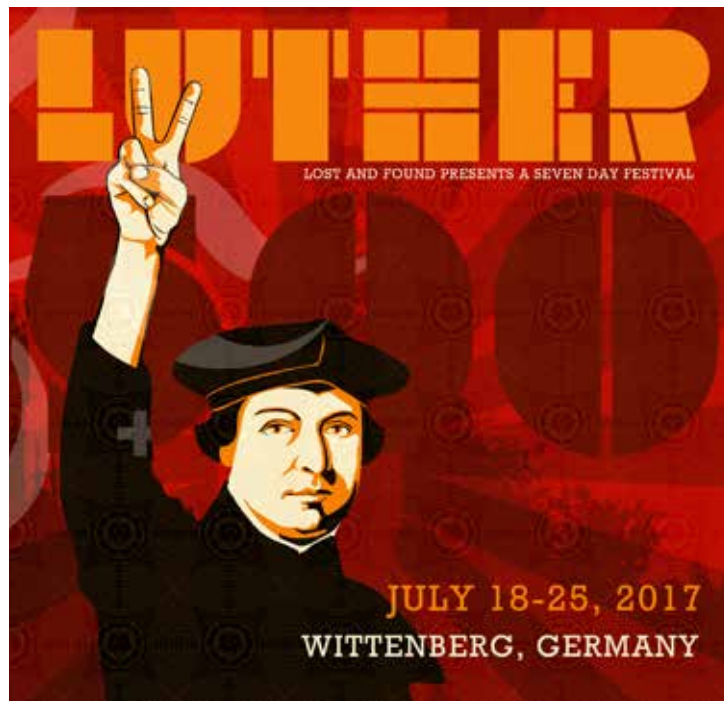
At Grace, we have a unique opportunity through our partnership with LifeMoves to serve our neighbor in need. LifeMoves partners with many houses of worship in the Palo Alto area to provide dinner to anyone who walks through the door. We will have a wonderful opportunity to get an update and to spend time with Tom Sagehorn, who coordinates the meals for LifeMoves in the Palo Alto area, as he is the guest at the Adult Forum on September 18. Help is always appreciated for the Tuesday Meal Prep/ Cleanup. If you are available to help with kitchen cleanup on the second or fourth Tuesday of the month, please contact Pastor Tuhina.

# Churchwide Social Ministry

At the recent Churchwide Assembly in New Orleans, voting members representing the ELCA voted on two memorials pertaining to peace and justice in the Holy Land. **Memorial C1: Peace With Justice in the Holy Land**, and **Memorial C2: Justice for the Holy Land Through Responsible Investment**, passed overwhelmingly without amendments. Memorial C2 is particularly important as the ELCA has voted to adopt a human rights-based investment screen for its social responsibility funds. Such a screen ensures that the church is not placing investments with organizations involved in human rights abuses, which includes the Israeli occupation of Palestine.

## Time & Talents

Thanks to Grace members, a successful pledge campaign is behind us, and a new budget for the 2016-17 year has been approved. Exciting projects and programs lie ahead. It is the exact right time for each of us to focus on the time and talent aspect of stewardship. Giving time and sharing talents are as important as anything else to make things happen at Grace. We thank Grace members who signed up for God's Work/Our Hands day on September 10, and encourage all of us to look for any other opportunity to share what has been a gift from God.



# Sunday, October 2, Luther500 Lunch!

Our first preparatory lunch gathering for our 2017 Luther500 Festival in Germany will be happening at noon in Brown Hall on the first Sunday of October. You are most welcome to join us, even if you haven't signed up for the trip, but are curious. Please plan to be there if you are going on the trip. If you don't live locally or are otherwise unable to attend, we will consider ways of including you in the information that is shared. We will be sharing about German culture and traditions, begin to work on a few key phrases, discuss the festival in more detail and save some time for people to discuss in self-selecting small groups what other plans they may have while in Europe. See you there!

**WANT TO GO TO GERMANY WITH GRACE NEXT SUMMER?  
LUTHER 500 FESTIVAL, JULY 18-25, 2017**

The Grace Lutheran 2017 Luther500 Festival will be an event to remember! We have just over 100 signed up to go and we have space for a few more . . . Singles, couples, families. Let us know. One does not need to be a member of Grace Lutheran Church, or live in the area, or even the continent, for that matter, to go. Check out [www.gracepa.org](http://www.gracepa.org) for all the details, and contact Pr Matt at [pastor-matt@gracepa.org](mailto:pastor-matt@gracepa.org) with any questions. You will be glad you went!



# TWENTY *awesome* WAYS TO GROW IN FAITH

FELLOWSHIP, SERVICE, EDUCATION, MUSIC, and WORSHIP

This fall, challenge yourself to take advantage of one of the many opportunities for spiritual growth, fellowship, and service at Grace!

**[01] Retiree Rendezvous Potluck**  
Bring your favorite food, hot or cold, appetizer, or dessert on the **THIRD Thursday of every month** in Brown Hall. We share our food at noon and then open our ears to listen.

**[02] Women's Breakfast & Conversation**  
Enjoy great food and conversation on the **second Saturday each month** beginning at 8:30AM in the Fireside Room. We take turns supplying breakfast so just bring yourself and your appetite!

**[03] Women's Circles:**  
**Miriam Circle** welcomes all! We meet monthly from October through June, on the **first Tuesday of the month** from 7:30-9:00PM

in the Fireside Room. We have social time with dessert and refreshments at 7:30, and a leader for Bible study, or books in our library, or what's going on with music from our hymnals or the greater ELCA, or a book review—from guests who come each month. Hope to see you starting in October! If you have any questions please contact Miriam Teeter at 650-494-1175

**Ruth Circle** meets the third Monday of each month 10:30AM-1:00PM during the school year, except December. We drink a little tea or coffee when we come to chat, have a little discussion, usually led by Pastor Cora, and the hostess serves a light lunch at noon. We enjoy getting together at homes of ladies who come, and are happy to welcome any new ones who would like to join us; contact Mary Carlson, secretary.

**[04] Young Adults** Anyone who is finished with school or continuing school, married or single—all are welcome as we meet once a month or more for social activities. Everything from Beer Brewing Classes, potluck lunches, movie day, wine tasting to after church brunch. The goal is to provide fellowship opportunities, as well as a place to have relevant conversations about faith. Contact Elizabeth (elizabeth@gracepa.org)

**[05] Exercise Group** A group meets in Brown Hall three times a week for exercise—**Monday, Wednesday, and Friday** from 8:30 - 9:30AM. The video used can be approached at varying levels of intensity - perfect for any level of fitness. All are welcome!



**06 Wednesday Work Crew** The Wednesday Work Crew meets the **second and fourth Wednesdays** of the month at the church from 8:30 to 11:00AM to do repairs and maintenance of the church's facilities. Our mission is to keep the lights on and keep the water running where it should and not running where it shouldn't. If you are interested, contact Steve Madsen. (s8madsen@yahoo.com)

**11 Sunday Adult Forum** A weekly opportunity for spiritual growth with relevant and interesting topics.

**12 Middle School Mentors** This program pairs an adult member of the congregation with one of our middle school students. They all gather **once a month on Sundays** for group game time and one-on-one conversations. This program is such a blessing and a way for us all to share our faith.

**16 Chancel Choir** Open to any singer of high school age and up of any experience level. Rehearses on **Wednesdays** from 7:00-8:30PM, beginning on September 7. The choir sings a wide variety of music and sings most Sundays, September through May.

**17 Handbell Choir** Rehearse **Thursday afternoons** from 5:30-6:45PM, beginning September 8; ring in church about one Sunday each month. We're always looking for a few good ringers. No prior experience with bell ringing is necessary, although some basic music-reading ability is helpful. We'll teach you all the rest!

**18 Altar Guild** generally working in teams of two, is responsible for preparing for communion and cleaning up afterwards. The time commitment is minimal, about two out of every ten weeks, but the rewards are worth it. It may look like we're just preparing a meal, washing dishes, and doing laundry, but our service gives us the chance to be in a quite sanctuary with a perfect opportunity for a little reflection and prayer. If you are interested in joining the Altar Guild, please contact Maria Derrick or the church office.

## **07 Men's Breakfast**

*Every Tuesday at 7 am at Bill's Cafe in Midtown. This is a casual time to catch up and support one another. New faces are always welcome and there is no need to RSVP. Feel free to drop in when you are able. It will enrich your experience of Sunday morning worship by deepen your relationships with other men in the congregation.*

**08 Quilters & Crafts** Grace's quilters meet on **Wednesday mornings** from 10 - 11:30AM in Brown Hall. We are a busy, involved, talkative group, and often bring our own "show and tell" projects to share with each other. We have made blankets for Project Linus, book bags for Lutheran World Relief, twin-sized quilts for adolescents aging out of foster care, pillowcase dresses for Africa, and large quilts for special benefits (such as *Bright Stars of Bethlehem*) and special people. We use donated fabrics and purchase batting. Quilts for our students graduating from high school have been an ongoing project since the 1990s. We cut squares and design quilts and blankets at church, and cut more squares and sew at home. Please do stop by on a Wednesday morning. We'd love to have you!

**09 Tuesday Meal Preparation** Two crews of Grace members prepare and serve the Breaking Bread meal for the hungry on Tuesday afternoons at Grace. Rotation is once every five weeks. Contact Pastor Tuhina if you can help! (pastortuhina@gracepa.org)

**10 God's work. Our hands.** Join us for upcoming Habitat for Humanity/Thrivent Builds work days. We are helping seniors and low-income families stay in their mobile homes—some of the last remaining affordable housing in the Silicon Valley—by helping with paint and maintenance so these families can stay in their communities. Projects are scheduled for Saturdays; the next one is on September 10. Please contact Bruce FitzGerald for more information.

**13 Open Bible Study** (Sunday texts). Every **Thursday morning** in the library conversation on the texts for the coming Sunday is lead by one of our pastoral staff. Drop in any time, as each session is stand alone. No experience is necessary . . . all are welcome!

## **14 Tuesday Meal Clean-up**

*As Christians worshipping in prosperous Silicon Valley, Grace members have ample opportunity to put their talents (time) to work in the service of others. Every Tuesday Grace hosts a weekly dinner for the hungry. Some of our fellow members arrive at 4:30 pm to prepare and serve dinner (see opportunity # 09). Other members arrive at 5:15 pm to wash dishes and clean up the kitchen. Neither activity requires great skill, only the willingness to serve others. Please consider volunteering. For more information and to sign up, contact Pastor Tuhina (pastortuhina@gracepa.org).*

**15 Library Open every Sunday morning**, or available any other time that someone on campus can unlock the door. Check out is self-service. We also maintain a cart in the narthex with rotating material for checkout. Wednesday mornings are on-site work time for the library committee. We welcome volunteers, book/video reviews, and book/video suggestions. Contact Mary Ashley at 650-494-1829 or meashley@pacbell.net.

**19 Worship Leaders** Assisting Ministers, Lectors, Communion Assistants, Ushers, Greeters, Congregation. So many ways to be an integral part of the worship experience!

**20 Labyrinth** Available 24/7, labyrinths are currently being used world-wide as a way to quiet the mind, recover a balance in life, encourage meditation, insight, self-reflection, stress reduction, and to discover innovation and celebration. There is no right way or wrong way to walk a labyrinth. Use the labyrinth in any way that meets what you need while being respectful of others. ■

# Children Youth and Family Year Overview

## Mark your calendars now!

**September 11** | Fall Kick Off! | 9:30 am Sunday School for all ages | 11:45 am Lunch and fun!

**October 2** | Blessing of Animals | 10:45 am

**October 14-16** | Elementary Retreat 3-5 grades | Mt. Cross

**October 28** | JamBOOree | 6 - 9 pm | All Ages | Potluck Dinner | Brown Hall

**October 28** | Middle and High School Movie Night | 9 pm - 11 pm | Youth Room

**October 30** | ReformationFest | Lunch and Celebration | Noon | In the Courtyard | All are welcome

**November 11-13** | Middle School Retreat | Mt. Cross

**November 20** | Advent Festival | 11:45 am | Brown Hall | All ages crafts and family fun | Soup and Lefse Lunch

**December 11** | Christmas Program | 9:30 am

**February 12** | SweetHeart Party | Noon | All girls and women are invited!

**February 24-26** | High School Retreat | Mt. Cross

**April 9** | Palm Sunday - family celebration | 9:30 am

**April 15** | Easter Vigil | Middle/High School Easter Prep/Pizza!

**April 16** | Easter celebration and brunch | Egg hunt

**May 7** | Rite of Confirmation | 10:45 am

**May 21** | Senior Quilt Sunday | Last day of Sunday school

**June 12-16** | CMT: I'm Blessed | K-6 Grades

**June 18** | Summer Sundays begin! | All generations

**June 19-30** | CMT: Sinchi Sacha | K-6 Grades

**June 28 - July 3** | Western States Youth Gathering- High School Youth | California Lutheran University

**July 10-14** | Day Camp 2017 | K-5 Grades

**July 18-25** | Grace Goes to Germany

**July 24-28** | CMT: We Have a Right | K-6 Grades

**July 31 - August 11** | CMT: The Disappearance of Mirabelle Van deVeer | K-6 Grades



# Radical Hospitality

Elizabeth Hood,  
Director of Children, Youth,  
and Family Ministry

Working in Children, Youth, and Family Ministry means that my year ends in a week or two, and I start a brand new year on our Fall Kick Off on September 11. Happy New Year! As I reflect on everything that happened this year, what worked and what didn't, the best part is taking a moment to start again and dream of what this next year will look like. This week, seven years ago, I was packing up my life and moving to Palo Alto to start a new adventure and dream about what my life could look like—and lucky me, seven years later, I am still doing that! This new year holds so much promise and excitement!

This year has been so full! The words that keep coming to mind are **gratitude** and **generosity**. I have experienced so much of both. I have just returned from my sixth build with Habitat for Humanity and Thrivent Builds—this time in Vietnam—and I can't begin to describe all the ways my time and energy spent building gave me love, hope, and joy! I gave what I could but, I received so much more! The people of Vietnam were so full of *radical hospitality*, so kind, giving, and generous. I have never seen anything like it. A lot of what I do on a daily basis is Hospitality. It is something I value greatly, and I learned so much more from the people in Vietnam about what it means to be radically hospitable.

I hope and pray that this year, I learn to live and embody that kind of gracious hospitality in all that I do. ■

*Elizabeth Hood*





# Lake Reflections

*This summer I was lucky enough to travel to Flathead Lutheran Bible Camp in Montana with 15 of our High School youth for a week of camp and service projects. We flew to Portland and met up with my friend and fellow youth worker and her youth to form a mega group of 33 of us! Then we took the train to Montana for camp. We had four counselors and got to go to camp just like all the other campers, with campfire, Bible studies, and big field games, except that during the day, we did volunteer work!*

*On our first day, we worked at a homeless shelter called the Samaritan House. We learned all about how they serve the homeless there. We sorted donated bedding all day, the youth worked very hard and got a lot done! The second day, we served at a home called Lighthouse Christian Center, a home for adults with disabilities. We worked all over the property, their farm and garden, and helped do work projects all over with many of their clients. I was close to tears most of the day seeing how hard the youth worked, and the sincere compassion and patience they had working with all the residents of the home, it was truly incredible!! On Wednesday, we got to sail on the lake, which was a favorite for us all. Then to round out the week on Thursday, we did a highway clean up, which was an exhausting two-mile stretch in the Montana heat! We worked hard, loved hard, and played hard. It was a truly incredible week! Thank you to everyone at Grace who supported us and made this trip possible!!*



# Summer Sundays

*We had a fantastic summer with Summer Sundays. We gathered six times this summer for stories of water from the Bible. We then shared our stories and experiences and learned together, all ages together. Thanks to all who came out and shared with us!*





# Day Camp Recap

*This summer at Grace, we hosted a successful Day Camp!! We had about 33 children, we had a team of four young adult counselors from Lutheran Retreats Camps and Conferences, two host families, a handful of high school volunteers, more than five adult volunteers making snacks and lunches throughout the week, and so many other people who made this week possible!*

*Thanks to Julie Buckley and Gretchen Rauch for being our host families! And a HUGE thanks to Maria Derrick for being in charge of lunches and snacks! We were thrilled with the turnout this year and the support of the community at Grace! We had a wonderful closing program and potluck dinner Thursday evening, and many wonderful days of camp filled with fun, faith, and learning. Thank you to everyone who made Day Camp possible this year!! We can't wait till next year!*



# music @Grace



Come one, come all: the musical opportunities await you!

After a very successful first season in 2015-2016 of "Grace Notes Live," our monthly concert series, I am very excited to see the plans developing for another fun year! This fall we begin a year-long celebration leading up to the 500th anniversary of the Lutheran Reformation in October of 2017. Several of our concert events this year will help us observe this important commemoration.

We begin this fall with a musical event that is not exactly a "concert." In addition to being the beginning of our Reformation Year, this fall marks the tenth anniversary of the publication of our current hymnal, the red Evangelical Lutheran Worship. To celebrate this wonderful resource and the gifts it has brought to the whole Church, I will be leading a "Hymnathon" the weekend of October 8 and 9. The goal: to sing one stanza of every hymn in the book. There are 654 of them! We will begin at 9:00 am on Saturday, October 8. There will be a 10 minute break every hour, and longer breaks at mealtimes. If we are not finished by 9:00 pm, we will

resume at 1:00 pm on Sunday and continue until we've finished the book or at 6:00 pm, whichever comes first. Come for 15 minutes or several hours; come and go as you please. It'll be interesting and fun. People often walk or run long distances and gather pledges for special charitable causes. At this event you'll be invited to sponsor me and my endurance at the keyboard as a gift to our music program and the remainder of this season's concert series!

In November, we'll have a concert of music by Lutheran composers for voices and trumpet, and in December we will repeat last year's very successful "Singalong Messiah"! Plans are also underway for a Bach cantata vespers next spring with Grace's choir, choirs from several neighboring congregations, and orchestra. Stay tuned for all the details!

In the meantime, our various musical ensembles are beginning their new seasons, and I invite you to consider joining us:

**Chancel Choir**, or the "adult choir" is open to any singer of high school age and up. We rehearse on **Wednesdays** from **7:00-8:30 pm**, and will begin on **September 7**. The choir sings a wide variety of music and sings most Sundays, September through May. We welcome singers of any experience level, from beginners to the most experienced. No audition is necessary, just come give it a try any Wednesday. We'll be delighted to see you.

**Praises Ring** is Grace's handbell choir. We rehearse on **Thursday afternoons** from **5:30-6:45 pm**, and will begin on **September 8**. The bell choir rings in church about one Sunday each month, plus Christmas Eve and Easter Sunday. We can always use another ringer or two. No prior experience with bell ringing is necessary, although some basic music-reading ability is helpful. We'll teach you all the rest!



Our **Children's Choirs** rehearse late on **Wednesday afternoons**. We divide into two choirs in order to focus our activities in an age-appropriate way. **Grades K-2** meet from **4:45-5:15 pm**. During this rehearsal, we sing simpler unison songs and sometimes play musical games. We learn a lot but have a good time doing it! **Grades 3-8** rehearse from **5:30-6:30 pm**. Middle school youth who are attending Confirmation class later in the evening are especially encouraged to continue in choir. This upper elementary and middle school group focuses on music reading, worship leadership, vocal development, part singing, and music literature appropriate for their stage of development. They also learn to be leaders and vocal models for the younger children. The children's choirs will sing in church about once a month. Our first rehearsal is **September 13**.

Please be welcome to contact me at any time ([tim@gracepa.org](mailto:tim@gracepa.org)) with questions regarding our music programs. Everyone is welcome!

Our monthly service of **Evening Prayer in the style of Taizé** continues on the **second Sunday of each month**. This quiet, deeply contemplative form of worship originated in the ecumenical religious community of Taizé in Burgundy, France. The community of about 100 brothers draws thousands of people (mostly under age 30) every summer for a time of spiritual reflection and renewal. Taizé worship consists mainly of singing, and we are familiar with some of their music already. Much of it consists of very short musical phrases repeated over and over to become a sort of mantra; we often sing these types of songs during the distribution of Communion on Sunday

mornings. I have personally taken two weeklong retreats in the Taizé Community itself, and have experienced this form of worship to be moving and life-changing. Our next Taizé service at Grace will be **Sunday, September 11**, beginning at 7:00 pm in the Sanctuary. I look forward to seeing and singing with you there!

Tim Getz,  
Director of Music Ministry



# ELW Hymnathon

Saturday, October 8 | 9am - 9pm  
 Sunday, October 9 | 1pm - done







**LEFT**

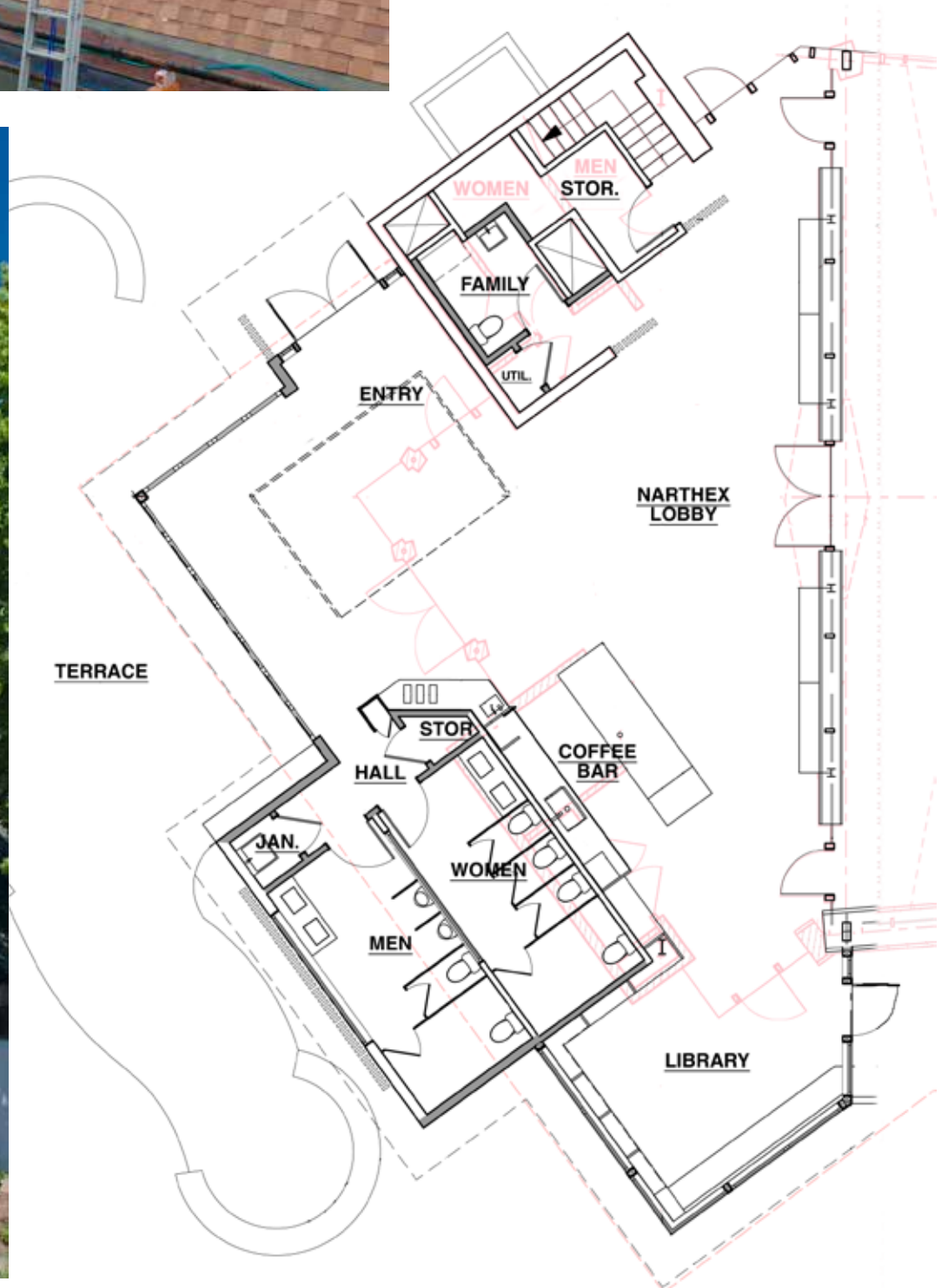
*The sanctuary roof gets its new shingles. Thanks to Andrew Mellows there is a complete time lapse record of the project in 4 minutes! Check it out on our Facebook page...*

**BOTTOM LEFT**

*The steeple glass is cleaned and reglazed. No more leaks!*

**BOTTOM RIGHT**

*A plan for the redesigned narthex.*





# Razing Raising the Roof

If you have been at church lately, you are probably aware of recent efforts by the Building Team. The most obvious is the fresh new roof on the sanctuary. The old and shaky wood shakes had exceeded their useful life long ago, and there were leaks in some areas of the flat tar and red gravel roofing (over the sacristy, for example). The timing of this work was originally going to coincide with the narthex construction and be managed by the same building contractor. As the narthex schedule slipped (more on that later), we recognized that we could save time and money by moving forward on the maintenance tasks independently and getting them finished before winter rains may appear. So...

In June, a glazier, on a 60-foot boom, cleaned all the stained glass on the spire and reglazed all the joints. He discovered gaps as large as one-quarter inch where the panes come together at an angle at the rear of the spire. Those openings had most likely been the source of the water that fell on the choir whenever they sang during a rainstorm. The angular joint has now been sealed with a metal strip and extra caulking—problem solved (with a 10-year warranty in the bargain).

The roof project was scheduled for a (rare!) period when the campus was relatively free of activity—after the final CMT performance and before Rally Day. It started with removing all the existing cedar shakes and the underlying boards, leaving bare the original plywood underlayment, ready for a fresh layer of heavy duty tar paper and new shingles. We chose Certainteed Solaris shingles as being just right for our application: “a steep-slope, solar reflective asphalt roofing shingle which contains advanced colored granules that reflect the sun’s rays.” The latter feature enables Solaris to meet the California Cool Roof Rating Council guidelines for reducing energy costs. Plus, the roof looks pretty cool!

While the roof was uncovered, we took advantage of the unique opportunity to strengthen the attachment between the roof and the masonry wall adjacent to Pastor Matt’s office. This seismic upgrade,

recommended by our resident structural engineer Doug Hohbach, will make the sanctuary more resistant to the likely stresses of an earthquake. The second element of the upgrade, at the opposite corner of the roof, will be included in the narthex construction project.

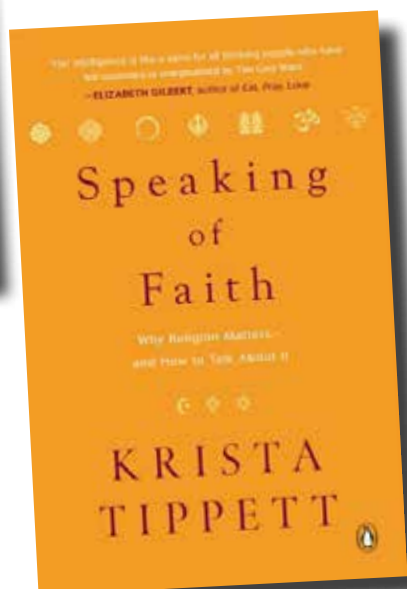
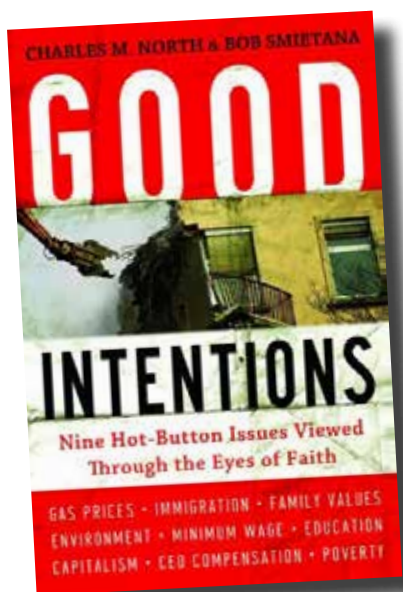
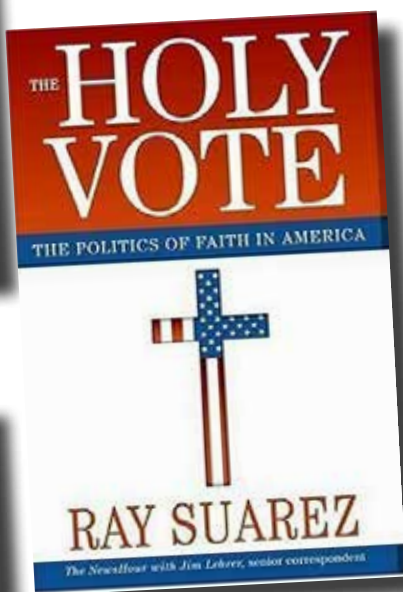
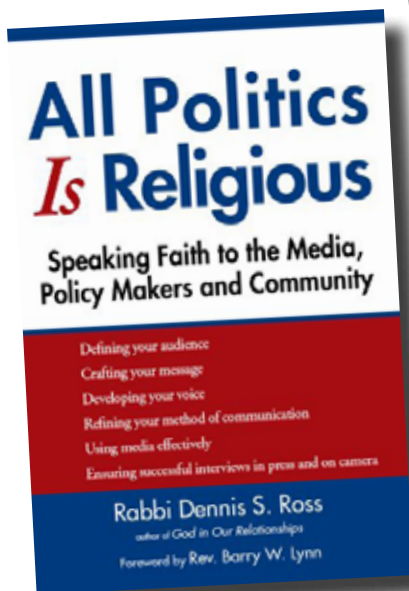
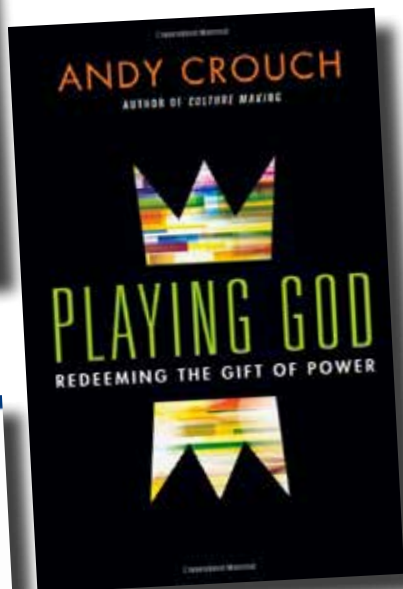
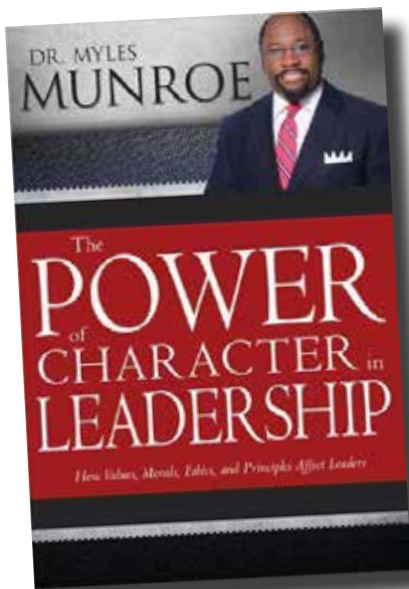
Now, about the narthex project: We continue to focus considerable time and attention on creating a design that will simultaneously A) bring delight to all who experience our new front door, B) satisfy the City of Palo Alto in all aspects, and C) meet our budgetary constraints. The latter is made more challenging by the City’s position that we must bring our entire parking lot into compliance with strict environmental regulations as a condition of approval for the narthex addition. The initial cost estimate for the “site work” (parking lot renovations and the associated landscaping of the lot and the narthex exterior) was nearly \$1 million; so we recognize that we are not quite ready yet to bring a total design package to the congregation for approval.

We have made significant progress in paring costs from the narthex design and making other adjustments required by City reviewers. With the usual caveat that nothing is final until it’s final, I have included a sketch of the narthex layout currently under review. (The current narthex is outlined in pale red.) The most noteworthy differences from earlier versions are 1) avoiding the significant expense of putting a doorway through the structural brick wall, and 2) repositioning the rest room “block” to save on roof construction costs and to expand the terrace. Further discussion of the lovely nuances of the latest design will be tabled pending City concurrence and updated cost figures. Stay tuned!

The Building Team ■



Timo Ahonen  
Christina Buttler  
Mary Cravens  
Gail Foelsch  
Doug Hohbach  
Barbara Larsen  
Steve Madsen  
Andrew Mellows  
Jim Schlatter, Chair  
Pastor Matt Smuts



# Faith and Politics

At the time this article is published, we'll all be facing two more months of non-stop political campaigning. Whatever your position is, I'm providing a list of books in the Grace Library that examine politics from a faith (mostly Christian) standpoint that give food for thought amidst the campaign madness. The intention is that they are reasonably neutral politically, and I apologize if any take a particular political stance. I've only skimmed them briefly. The books are conveniently on display on the cart beside the desk.

*The Power of Character in Leadership: How Values, Morals, Ethics and Principles Affect Leaders*, by Dr. Myles Munroe. Dr. Monroe is concerned with the process of character building to develop moral force.

*Playing God: Redeeming the Gift of Power*, by Andy Crouch. *Christianity Today* Executive Editor Crouch unpacks the dynamics of power that either can make human flourishing possible or can destroy the image of God in people.

*All Politics Is Religious: Speaking Faith to the Media, Policy Makers and Community*, by Rabbi Dennis S. Ross. "Faith grows when we uphold its vision for a better world and speak of it in the public square--while keeping church and state separate."

*The Holy Vote: The Politics of Faith in America*, by Ray Suarez. Mr. Suarez examines the way organized religion and politics intersect in America, and how this powerful collision is transforming the current and future American mind-set.

*Good Intentions: Nine Hot-Button Issues Viewed Through the Eyes of Faith*, by Charles M. North and Bob Smietana. An economist and a religion journalist attempt to couple some basic Christian principles with standard economic tools to make sense of nine issues that affect us all.

*Speaking of Faith*, by Krista Tippett. Ms. Tippett illustrates a way to speak about faith that defuses the usual minefields. She traces a powerful, creative, and humbling line between religious ideas and real life.

I'm reminding everyone, once again, to search for overdue books and return them. ■

\_\_\_\_\_  
Mary Ashley



# Council Notes

The focus for the church council over the summer and into the fall continues to be supporting the progress of the building team and the careful planning of budget by the finance committee. While those two areas remain the same, we start the new programming year with a great deal excitement about the year that has wrapped up, the activities currently underway, and even bigger things to come.



Nate Calhoun  
Grace Council President

After the conclusion of the of the first year in our new fiscal calendar at the end of June, we are extremely happy to report the strongest fiscal performance in the last 10 years! This is a result of both the generous giving of our vibrant and engaged congregation, and the financial expertise and tireless efforts of the finance committee. As we move forward with the 2016-2017 budget that was approved at the August 14 congregational meeting, we will be separating operating income and expenses from capital income and expenses for the first time. The main purpose for this is the desire to be more intentional about identifying and our addressing our capital needs.

If you have been on campus recently and had a chance to look up, then you've noticed the start of the work to replace the roof of the sanctuary! After more than a year of work by the building team on

the campus master plan, it is exciting to see the start of a big project and tangible results of all the generous giving. That excitement is somewhat tempered

by the continued struggles to find a solution for the narthex project that fits within the constraints of the city planning department, the creativity of our architect, the budget, and the laws of physics. However, as we go through iterations of potential designs, we have confidence in our progress and are constantly reminded of how blessed we are to have the knowledge and dedication

of the building team leading us in this effort.

Starting this year on council, we have one new member, Mary Cravens. She is replacing Ray Ernenwein who completed his three-year term. Gail Foelsch, Ryan Riddle, and Holly Lucke all completed partial terms, but are eligible for and have agreed to start new three-year terms this year. We are happy to welcome Mary and want to thank Ray for all of his contributions during his three years on council and one year as president. We have not yet made updates to the committee liaison assignments for the coming year, but should have those set by the end of September.

See you all at Rally Day on September 11!! ■

## COUNCIL

Kimberly Badtke

Nate Calhoun, President

Mary Cravens

Gail Foelsch

Jane Garvey

Elise Grangaard

Sabine Kabel-Eckes

Holly Lucke

Don McElravy

Ryan Riddle, Vice President

Jim Schlatter

Katy Siegel, Secretary

If you smelled apple pies at Grace Lutheran on Thursday or Friday, it must have been the preschool kids baking again! Our first day of preschool each year is apple pie day. The children pick an apple or two off of our very old and also very delicious apple tree, to make an apple pie. It is hard to wait until the end of class to taste a slice—some of us just can't wait! The first month of school is exciting for all of us. We will be making cookies, "mini me"s, maybe have a beach day if the weather is hot, celebrating Mexican independence day, painting, making collages, singing, dancing, making volcanoes, listening to stories, and making new friends.

We have some openings in our school and would love some new friends. The classes are MWF 9:00-11:30 or 12:30, MWF 11:30 or 12:30 to 3:15, and T/TH 9:00 to 11:30. Come by and visit, join the class, and have some fun! Call the preschool at 493-8942, or Penny at 814-9949.



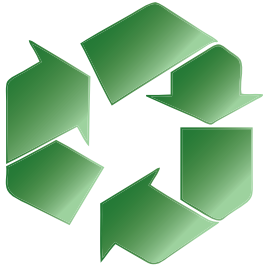


3149 Waverley Street  
Palo Alto, CA 94306  
650.494.1212

[www.gracepa.org](http://www.gracepa.org)



# Grace Lutheran Church



Printed on 30% post consumer recycled paper

**Sunday Worship**

**8:30 & 10:45 am**



Also broadcast on Cable 30

Sundays 11 am | 8:30 pm

**Mondays 12:30 pm**



**Evangelical Lutheran  
Church in America**

God's work. Our hands.  
[www.elca.org](http://www.elca.org)